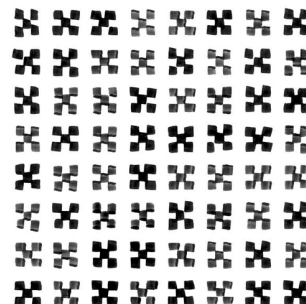


Model: PAIX SOMBRA

Size: 7.9" x 7.9" (20x20 cm)


Thickness: .31" (8 mm)

Material type: PORCELAIN



Technical Characteristics		Reference standard
Manufacture process	Single-firing	Dry pressed ceramic tile
Thickness (mm.)	8	UNE EN ISO 10545 Part 2
Length, width, thickness, side straightness, orthogonality, flatness.	Conforms to the requisites applicable to each model as defined in standard UNE-EN 14411 for Group B Ia	UNE EN ISO 10545 Part 2
Water absorption	E < 0,5 %	UNE EN ISO 10545 Part 3
Flexion resistance N/sq. mm. and breaking strength	> 35 > 1300	UNE EN ISO 10545 Part 4
Resistance to surface abrasion (Glazed tiles)	4	UNE EN ISO 10545 Part 7
Lineal thermic dilatation	< 9*10 <sup>-6</sup> /° C	UNE EN ISO 10545 Part 8
Thermic impact resistance	It stands the test	UNE EN ISO 10545 Part 9
Cracking resistance	It stands the test	UNE EN ISO 10545 Part 11
Frost resistance	It stands the test	UNE EN ISO 10545 Part 12
Slip resistance	Class 1	UNE ENV 12633:2003

Chemical resistance		
Domestic cleaning products	Type GA	UNE EN ISO 10545 Part 13
Swimming pool salt	Type GA	
Acids and bases (low concentration)	Minimum Type GLB	
Stains resistance	Minimum Type 4	UNE EN ISO 10545 Part 14

CE Marking	
	CE Declaration of performance
	Nº 001VV2013