

P19812211  
100097033

EVEREST BLACK 43,5X65,9(A)

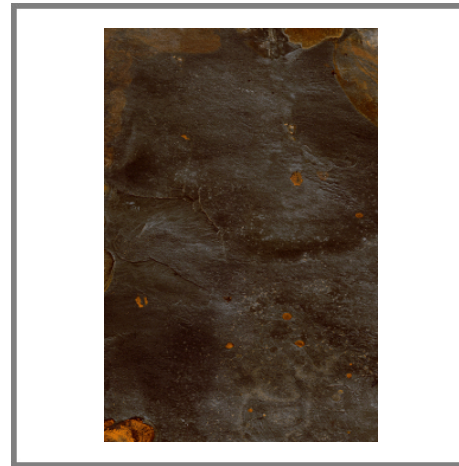
designtra™

**Model:** EVEREST BLACK 43,5X65,9(A)

**Codes:** 100097033 - P19812211

**Absorption:** Bla - Porcelain tiles (E<=0.1%)

**Thickness:** 3/8 INCH



### DIMENSIONAL FEATURES

Thickness	3/8 INCH	
Width	17 INCH	
Length	25 7/8 INCH	
Length and width deviation	Below 0.15%	<=0.5 %*
Side straightness deviation	Below 0.15%	<=0.5 %*
Squareness deviation	Below 0.15%	<=0.6 %*
Surface flatness deviation	Below 0.15%	<=0.5 %*

\*ASTM C485/C499/C502

### MECHANICAL FEATURES

Breaking strenght	712,48 LBF	>250 LBF*
Abrasion resistance	PEI 2	
Crazing resistance	Resists 3 cycles	

\*ASTM C648

### HYGIENIC FEATURES

Chemical resistance	Class "A" for swimming pools and cleaning products (resists attack). Minimum Class "B" for acids and bases	CLASE B Min. *
Stain resistance	Class 5. Easy cleaning with water	CLASE 3 Min. *

\*ASTM C650/C1378

### ANTI-SLIP VALUE

Friction (dry)	0.77	
Friction (wet)	>0,6	
Slip resistance (ramp)	R-10	

\*ASTM A137.1

### SCOPE OF USE

Technical code-1	Use on medium traffic floors	
------------------	------------------------------	--

### PACKING

Boxes	9,26 SQF/CS	
Pallets	555,41 SQF/PAL	
Units	3,09 SQF/ST	

System Certification



Do not use cleaning agents containing hydrofluoric acid.  
It is recommended to fix tiles with a minimum joint of 1,5 mm. Do not fix without joint.  
For big sizes, it is recommended to fix with mortars containing polymeric additives and to use the double gluing technique.  
Mosaic tiles must be grouted.

This document is only commercial and cannot be used as expert opinion, documentary evidence or in any legal or administrative procedure.  
A DCOF value of > 0.42 is the new standard for tiles specified for commercial level interior applications expected to be walked upon when wet, in standard A137.1-2012. It replaces the SCOF value of > 0.60 referenced in ADA Guidelines (measurement made as per the ASTM C1028 test method). However, there are many factors that affect the possibility of a slip occurring and then tiles with a DCOF of 0.42 or greater are not necessarily suitable for all projects. The specifier shall determine if tiles are appropriate for specific project conditions, considering by way of example, but not limited to: type of use, traffic, expected contaminants, expected maintenance, expected wear and manufacturer guidelines and recommendations. Tiles with a DCOF inferior to 0.42 shall only be installed when the surface will kept dry when walked upon and proper safety procedures are followed when cleaning the tiles.